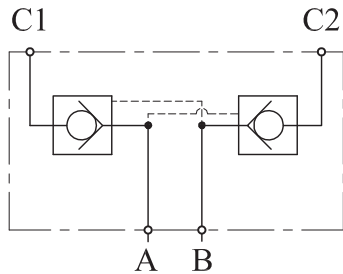


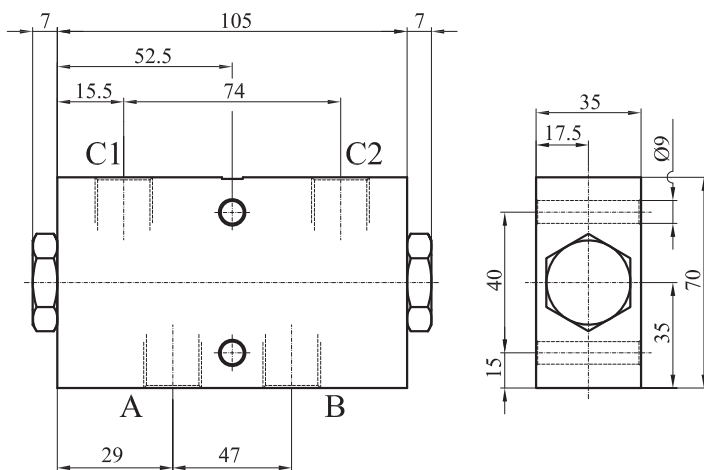
机能符号/Functional Symbol



技术参数/Technical Data

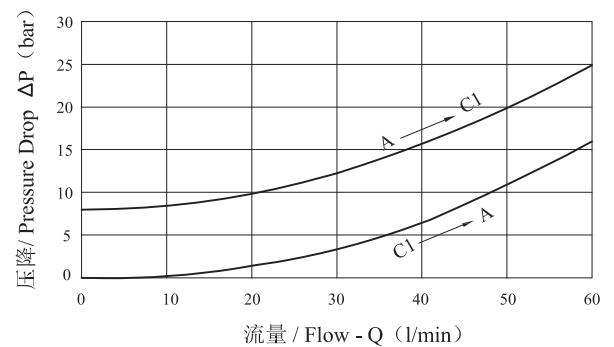
- Matching directional valve neutral function A.B-T.
建议应用Y型中位机能的换向阀
- Operating temperature: +40°C~+70°C
工作温度: +40°C~+70°C
- Working medium: ISO VG 10 to 68 according to DIN ISO 3448
工作介质: 符合DIN ISO 3448标准, 范围在ISO VG 10-68
- Material: Steel, zinc-plated
阀体材质: 镀锌钢体
- Sealing Material: Nitrile Rubber
密封材质: 丁腈橡胶

主要尺寸/Dimension



注: 所有油口尺寸均为G1/2

性能曲线/Performance



说明/NOTE

测试条件:

油温50°C, 油液黏度16cSt, 环境温度20°C

Test conditions:

T_{oil}: 50°C; V_{oil}: 16cSt; T_{amb}: 20°C

订货代码/Ordering Code

| 代号 Ordering Code | 先导比例 PILOT RATIO | 流量范围 Flow Range (l/min) | 最大压力 Max. Pressure (bar) | 开启压力 Cracking Pressure (bar) | 重量 Weight (kg) |
|------------------------|---------------------|----------------------------------|-----------------------------------|---------------------------------------|----------------------|
| 02A045105.00 | 4.7:1 | 10-60 | 400 | 4 | 1.3 |